

Case report: Diffuse Large B Cell Lymphoma (DLBCL) of cranial vault

Joo Hwan Lee, Il Gyu Yun, Jeong Gyun Kim, Jong Won Lee, Jin woo Hur, Hyun Koo Lee
Cheongju St. Mary's Hospital
Department of Neurosurgery

Case report

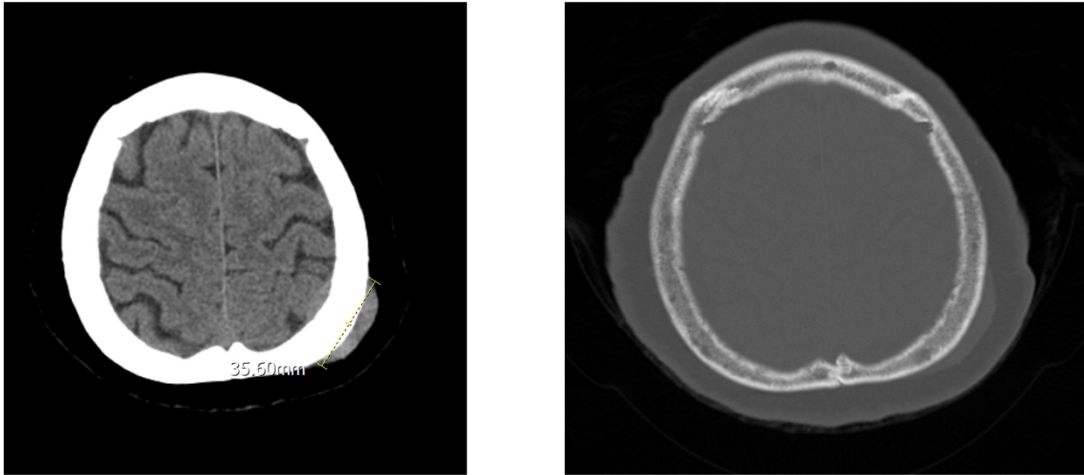
F/75

HTN/DM/HL -/-/-

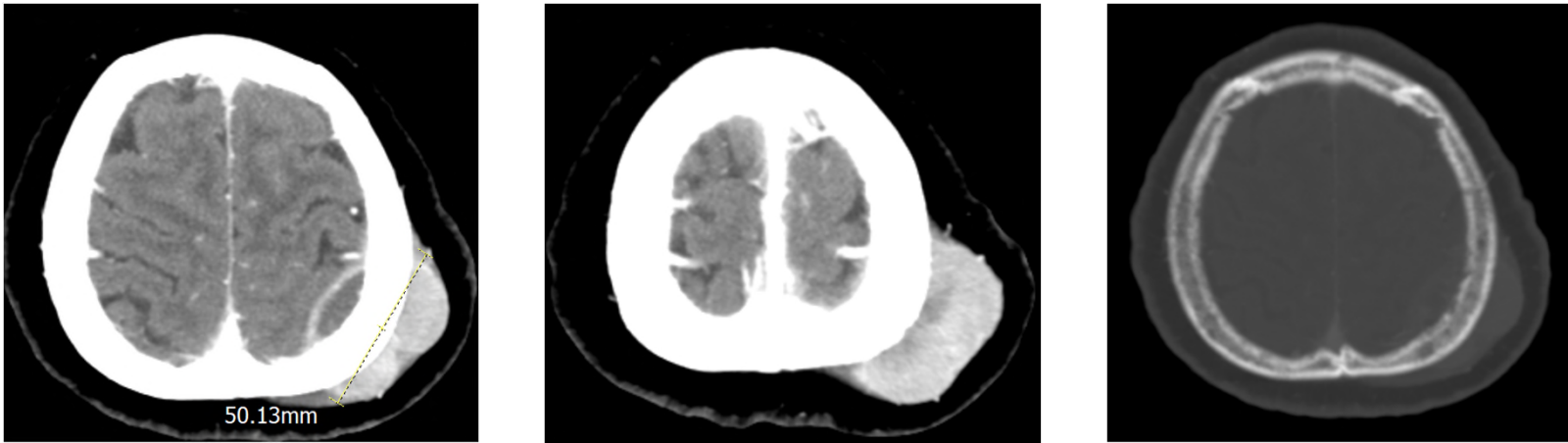
- Osteoporosis
- Gastric adenoma
s/p EMR

- Lt. parietal scalp mass
- Solid, non-movable, non-tender
- Growing in size for 2 months

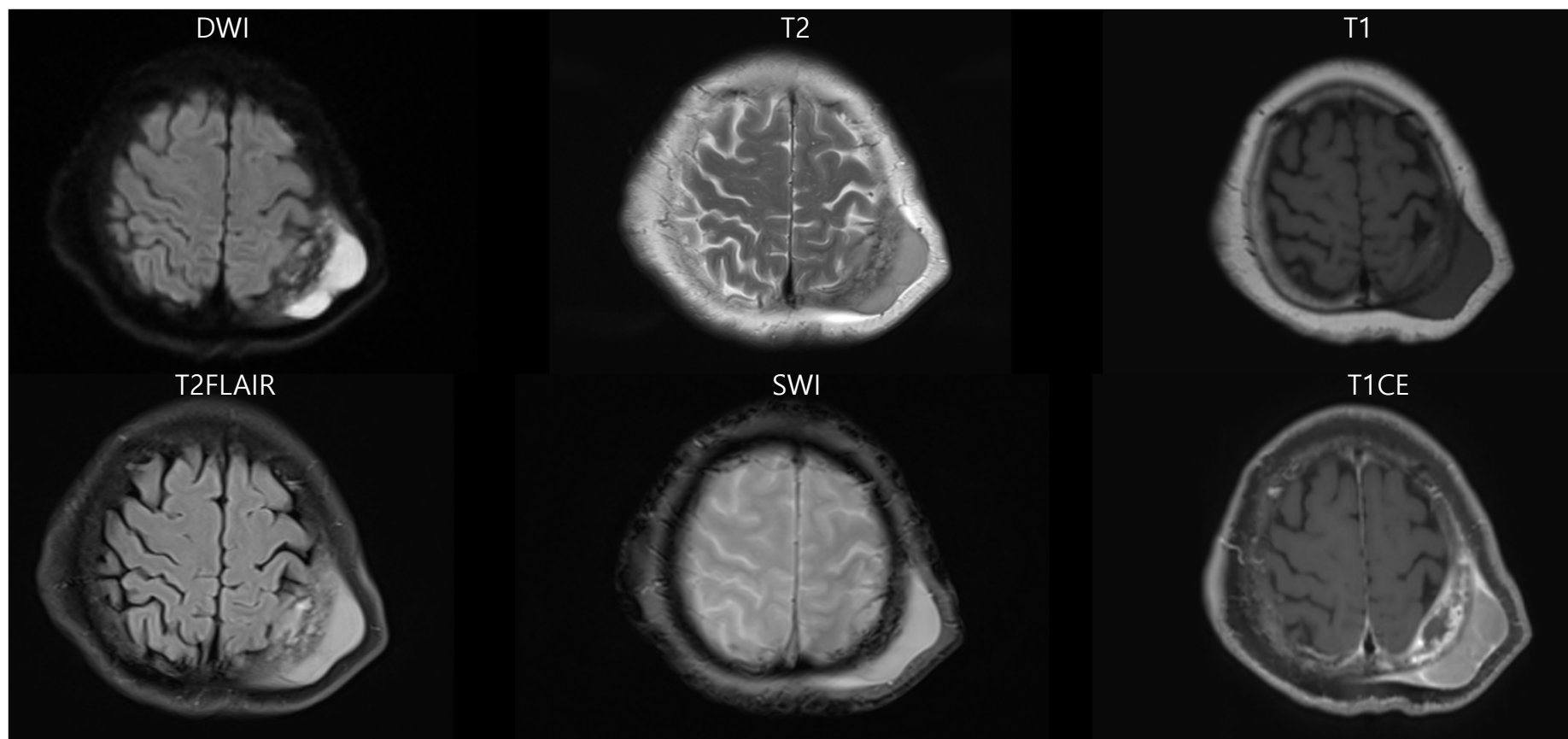
Brain CT (2023/4/3)



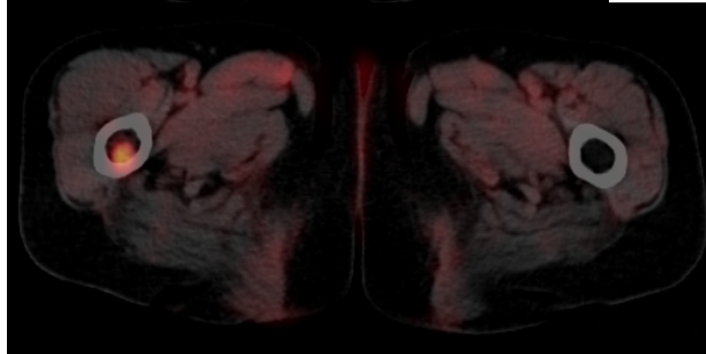
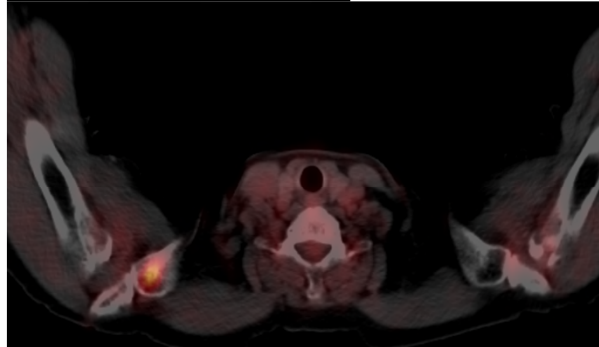
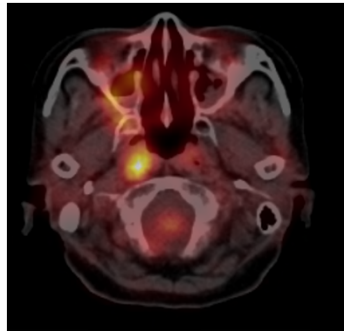
Brain CT (2023/5/8)



Brain MR (2023/5/10)



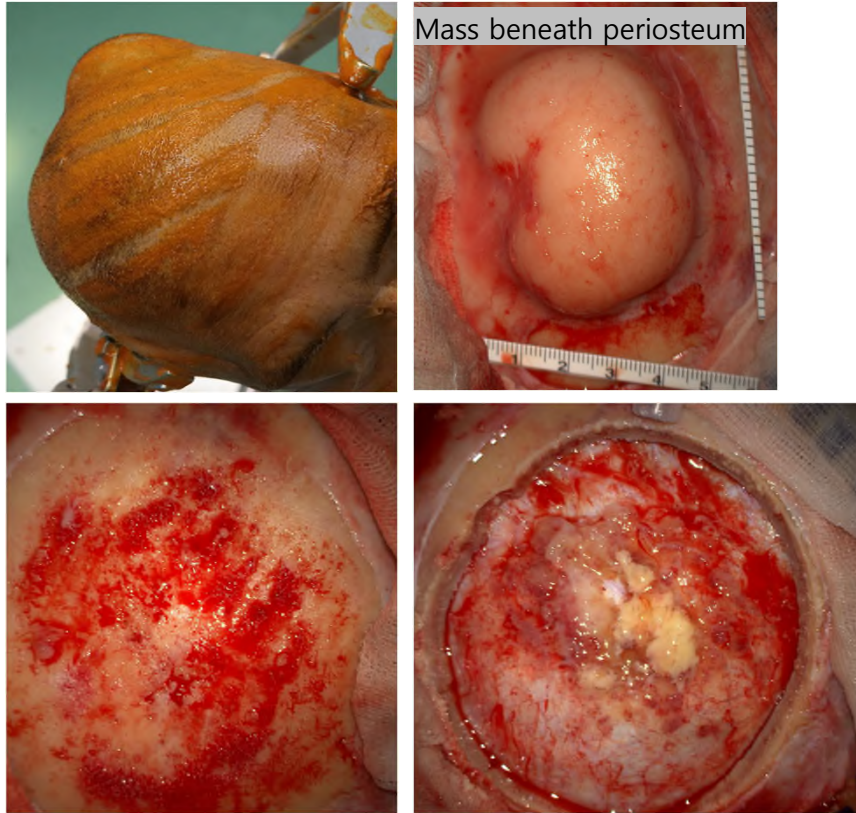
FDG PET CT (2023/5/11)



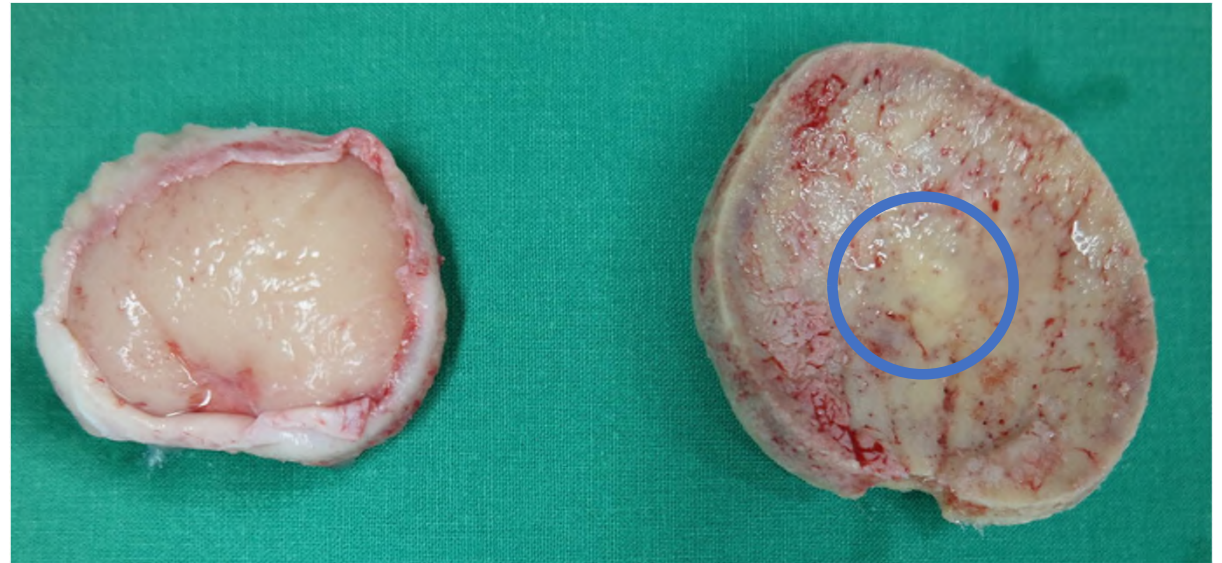
No abnormal results were found on

- Basic blood lab
- PB morphology
- Protein Electrophoresis (Serum & Urine)

OP findings



Yellowish granulated tissue was seen on skull inner table and dura mater, without involvement of arachnoid and brain parenchyme.



Frozen biopsy : malignant lymphoma

Focal sclerotic bone changes suggest that this tumor may have originated from the skull.

Biopsy result

[DIAGNOSIS]

Bone, skull, biopsy :

Diffuse infiltration of atypical lymphoid cells in the marrow space,
consistent with malignant lymphoma, diffuse large cell type.

Meninges, dura, excision :

Multifocal infiltration of malignant lymphoma, see note.

Soft tissue and bone, extradural, removal :

Consistent with malignant lymphoma, diffuse large cell, B cell immunophenotype with involvement of bone.

CD138 Negative
CD20 Positive
CD3 Negative
CD45(LCA) Positive

Diffuse Large B Cell Lymphoma
confirmed

Conclusion

Further discussion is needed regarding whether the primary lymphoma originated from cranial vault or other systemic lymph nodes.